



India Meteorological Department
Earth System Science Organisation
(Ministry of Earth Sciences)

BULLETIN NO.: 17 (BAY OF BENGAL 01/2020)

TIME OF ISSUE: 0845 HOURS IST

DATED: 18.05.2020

FROM: INDIA METEOROLOGICAL DEPARTMENT (FAX NO. 24643965/24699216/24623220)

TO: CONTROL ROOM, NDM, MINISTRY OF HOME AFFAIRS (FAX.NO. 23093750)

CONTROL ROOM NDMA (FAX.NO. 26701729)

CABINET SECRETARIAT (FAX.NO.23012284, 23018638)

PS TO HON'BLE MINISTER FOR S & T AND EARTH SCIENCES (FAX NO.23316745)

SECRETARY, MOES, (FAX NO. 24629777)

H.Q. (INTEGRATED DEFENCE STAFF AND CDS) (FAX NO. 23005137/23005147)

DIRECTOR GENERAL, DOORDARSHAN (23385843)

DIRECTOR GENERAL, AIR (23421105, 23421219)

PIB MOES (FAX NO. 23389042)

UNI (FAX NO. 23355841)

D.G. NATIONAL DISASTER RESPONSE FORCE (NDRF) (FAX NO. 26105912, 2436 3260)

DIRECTOR, PUNCTUALITY, INDIAN RAILWAYS (FAX NO. 23388503)

CHIEF SECRETARY, ANDAMAN & NICOBAR ISLANDS (FAX NO. 03192- 232656)

CHIEF SECRETARY, WEST BENGAL (FAX NO. 033-22144328)

CHIEF SECRETARY, GOVT. OF ODISHA (FAX NO. 0674 -2536660)

CHIEF SECRETARY, ANDHRA PRADESH (FAX NO. 0863-2441029, 08645-246600)

CHIEF SECRETARY, TAMIL NADU (FAX NO. 044-25672304)

CHIEF SECRETARY, PUDUCHERRY (FAX NO. 0413-2337575, 2334145)

Sub: Extremely Severe Cyclonic Storm 'AMPHAN' (pronounced as UM-PUN) over west-central and adjoining central parts of South Bay of Bengal: Cyclone Warning for West Bengal and north Odisha coasts: Orange Message.

The **Extremely Severe Cyclonic Storm 'AMPHAN'** (pronounced as **UM-PUN**) over central parts of South Bay of Bengal and adjoining central Bay of Bengal moved nearly northwards with a speed of 13 kmph during past 06 hours and lay centred at 0530 hrs IST of today, the 18th May, 2020 over **west-central and adjoining central parts of South Bay of Bengal** near latitude 13.2°N and longitude 86.3°E, about 790 km nearly south of Paradip (Odisha), 940 km south-southwest of Digha (West Bengal) and 1060 km south-southwest of Khepupara (Bangladesh). It is very likely to intensify further into a Super Cyclonic Storm during next 12 hours. It is very likely to move north-northeastwards across northwest Bay of Bengal and cross West Bengal – Bangladesh coasts between Digha (West Bengal) and Hatiya Islands (Bangladesh) during the Afternoon / Evening of 20th May 2020 as a Very Severe Cyclonic Storm with maximum sustained wind speed of 155-165 kmph gusting to 185 kmph.

Forecast track and intensity are given in the following table:

Date/Time(IST)	Position (Lat. °N/ long. °E)	Maximum sustained surface wind speed (Kmph)	Category of cyclonic disturbance
18.05.20/0530	13.2/86.3	180-190 gusting to 210	Extremely Severe Cyclonic Storm
18.05.20/1130	14.0/86.4	200-210 gusting to 230	Extremely Severe Cyclonic Storm
18.05.20/1730	14.6/86.5	220-230 gusting to 255	Super Cyclonic Storm
18.05.20/2330	15.2/86.6	230-240 gusting to 265	Super Cyclonic Storm
19.05.20/0530	15.9/86.8	220-230 gusting to 255	Super Cyclonic Storm
19.05.20/1730	17.6/87.2	200-210 gusting to 230	Extremely Severe Cyclonic Storm
20.05.20/0530	19.9/87.8	180-190 gusting to 210	Extremely Severe Cyclonic Storm
20.05.20/1730	22.1/88.6	145-155 gusting to 170	Very Severe Cyclonic Storm
21.05.20/0530	24.0/89.3	80-90 gusting to 100	Cyclonic Storm
21.05.20/1730	25.9/90.0	40-50 gusting to 60	Depression

Spatial rainfall distribution: Isolated: <25%, A few: 26-50%, Many: 51-75%, Most: 76-100%

Rainfall amount (mm): Heavy rain: 64.5 – 115.5, Very heavy rain: 115.6 – 204.4, Extremely heavy rain: 204.5 or more.

(1) Heavy rainfall Warning:

Odisha

Coastal Odisha is likely to experience light to moderate rainfall at many places from 18th May evening with heavy falls at isolated places over coastal Odisha (Gajapati, Ganjam, Puri, Jagatsinghpur & Kendrapara Districts) on 18th May, 2020. Rainfall at most places with heavy to very heavy rainfall at a few places over north coastal Odisha (Jagatsinghpur, Kendrapara, Jajpur, Bhadrak, Balasore & Mayurbhanj Districts) on 19th May and isolated heavy rainfall over north Odisha (Bhadrak, Balasore, Mayurbhanj, Jajpur, Kendrapara and Keonjhar Districts) on 20th May 2020.

West Bengal

Coastal districts of Gangetic West Bengal (East Medinipur, South & North 24 Parganas) are likely to experience light to moderate rainfall at many places with heavy falls at isolated places on 19th May. Rainfall at most places with heavy to very heavy falls at a few places & extremely heavy falls at isolated places likely over Gangetic West Bengal (east & west Medinipur, south & north 24 Parganas, Howrah, Hoogli, Kolkata and adjoining districts) on 20th May and heavy to very heavy rain over these districts on 21st May, 2020.

Sub-Himalayan West Bengal and Sikkim

Light to moderate rainfall at most places with heavy to very heavy falls at a few places over the districts of Sub-Himalayan West Bengal & Sikkim on 21st May, 2020.

(2) Wind warning

West Bengal & Odisha

- Squally wind speed reaching 45 to 55 kmph gusting to 65 kmph is likely to commence along and off south Odisha coast from 18th evening, extend to along & off north Odisha coast from 19th morning and along and off West Bengal coast from 19th afternoon.
- The wind speed will gradually increase becoming gale wind speed reaching 75 to 85 kmph gusting to 95 kmph from 20th morning along and off north Odisha (Jagatsinghpur, Kendrapara, Bhadrak, Balasore and Mayurbhanj districts) and West Bengal (east & west Medinipur, south & north 24 Parganas, Howrah, Hoogli, Kolkata Districts). It will gradually increase thereafter becoming 110 to 120 kmph gusting to 135 kmph along & off the above mentioned districts of North Odisha and 120 to 140 kmph gusting to 155 kmph along & off the above districts of West Bengal from the afternoon of 20th May 2020.
- Squally wind speed reaching 55-65 kmph gusting to 75 kmph likely to prevail over Puri, Khordha, Cuttack, Jajpur districts of Odisha during 20th May 2020.

Deep Sea area

- Gale wind speed reaching 180-190 gusting to 210 kmph is prevailing over west-central and adjoining central parts of south Bay of Bengal. It is likely to increase becoming 220-230 gusting to 250 kmph over northern parts of central Bay of Bengal and adjoining North Bay of Bengal from tonight to 19th May morning, likely to increase further becoming 230-240 gusting to 255 kmph by tonight.
- Gale wind speed reaching 220-230 gusting to 255 kmph over north Bay of Bengal from 19th morning and gradually decrease becoming 155- 165 kmph gusting to 180 kmph by 20th evening.

(3) Sea condition

Sea condition will be Phenomenal over west-central and adjoining central parts of south Bay of Bengal during next 24 hours. It will become Phenomenal over northern parts of central Bay of Bengal and adjoining north Bay of Bengal on 19th May and over north Bay of Bengal on 20th May 2020.

(4) Fishermen Warning

Spatial rainfall distribution: Isolated: <25%, A few: 26-50%, Many: 51-75%, Most: 76-100%

Rainfall amount (mm): Heavy rain: 64.5 – 115.5, Very heavy rain: 115.6 – 204.4, Extremely heavy rain: 204.5 or more.

- The fishermen are advised not to venture into west-central and adjoining central parts of south Bay of Bengal during next 24 hours, to central Bay of Bengal on 19th May and into North Bay of Bengal during 19th to 20th May 2020.
- Also, fishermen are advised not to venture into North Bay of Bengal along and off North Odisha, West Bengal and adjoining Bangladesh coasts during 18th to 20th May 2020.

(5) Storm Surge expected

- Storm Surge of about 4-5 meters above Astronomical Tide is likely to inundate low lying areas of south & north 24 Parganas and about 3-4 meters over the low lying areas of East Medinipur District of West Bengal during the time of Landfall.

(6) Damage Expected and Action suggested

(a) West Bengal (east Medinipur, south & north 24 Parganas, Howrah, Hoogli, Kolkata districts)

Damage Expected:

- Extensive damage to all types of kutchha houses, some damage to old badly managed Pucca structures. Potential threat from flying objects.
- Extensive uprooting of communication and power poles.
- Disruption of rail/road link at several places.
- Extensive damage to standing crops, plantations, orchards.
- Blowing down of Palm and coconut trees.
- Uprooting of large bushy trees.
- Large boats and ships may get torn from their moorings.

Fishermen Warning & Action Suggested:

- Total suspension of fishing operations during 18th to 20th May 2020.
- Diversion or suspension of rail and road traffic.
- People in affected areas to remain indoors. Mobilise evacuation from Low lying areas.
- Movement in motor boats and small ships not advisable.

(b) Odisha (Jagatsinghpur, Kendrapara, Bhadrak, Balasore, Jajpur & Mayurbhanj)

Damage Expected:

- Total destruction of thatched houses/ extensive damage to kutchha houses. Potential threat from flying objects.
- Bending/ uprooting of power and communication poles.
- Major damage to Kutchha and Pucca roads. Minor disruption of railways, overhead power lines and signalling systems.
- Widespread damage to standing crops, plantations, orchards, falling of green coconuts and tearing of palm fronds. Blowing down of bushy trees like mango.
- Small boats, country crafts may get detached from moorings.

Fishermen Warning & Action Suggested:

- Total suspension of fishing operations along & off Odisha coast during 18th to 20th May 2020.
- Judicious regulation of rail and road traffic.
- People in affected areas to remain indoors.
- Movement in motor boats and small ships unsafe.
- Small Fishing Boats may get detached and damaged from their moorings.

Kindly visit www.rsmcnewdelhi.imd.gov.in and www.mausam.imd.gov.in for updates on the system.

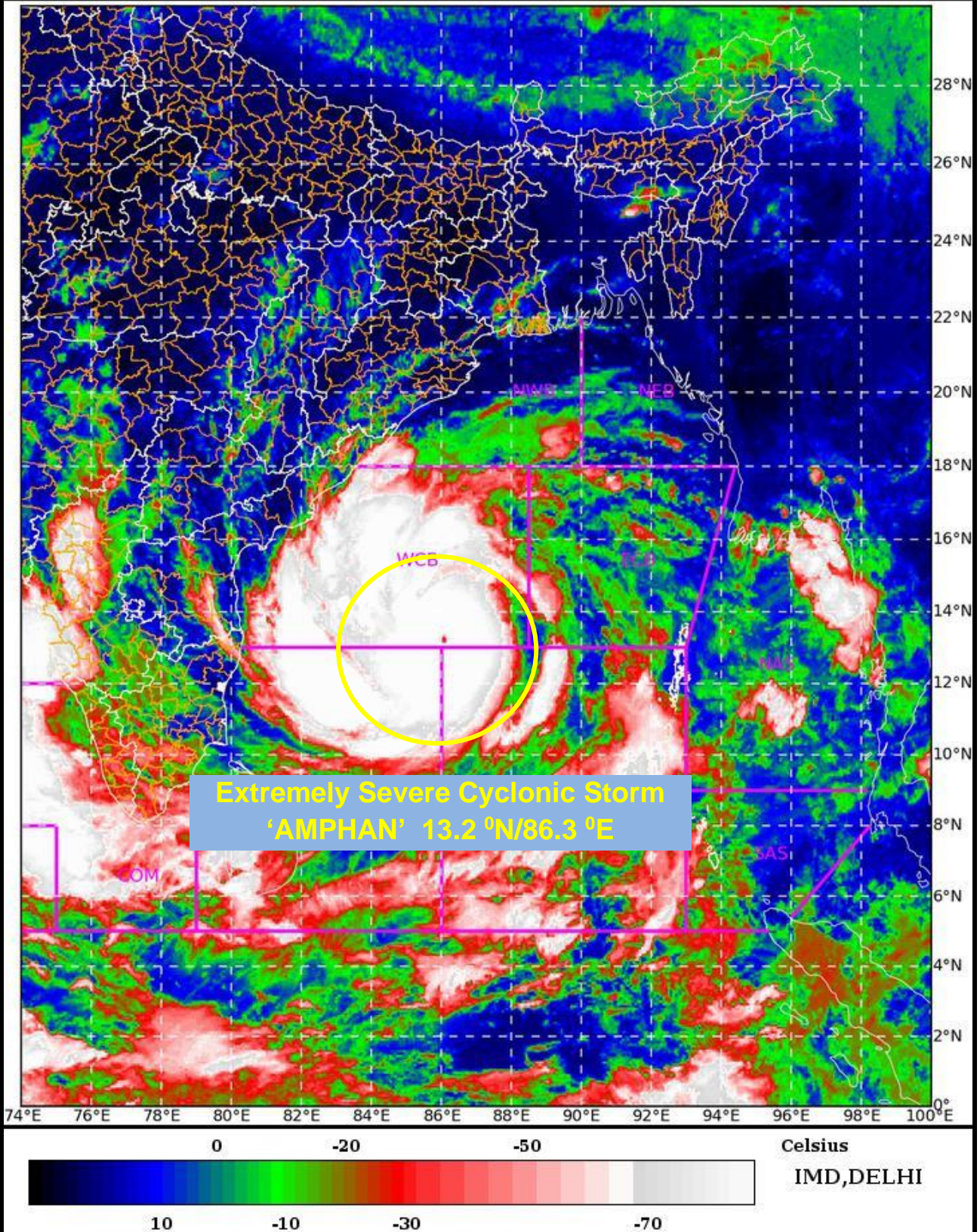
Next Bulletin will be issued at 1130 hours IST of 18th May, 2020.

(V. R. Durai)
Scientist-E, RSMC, New Delhi

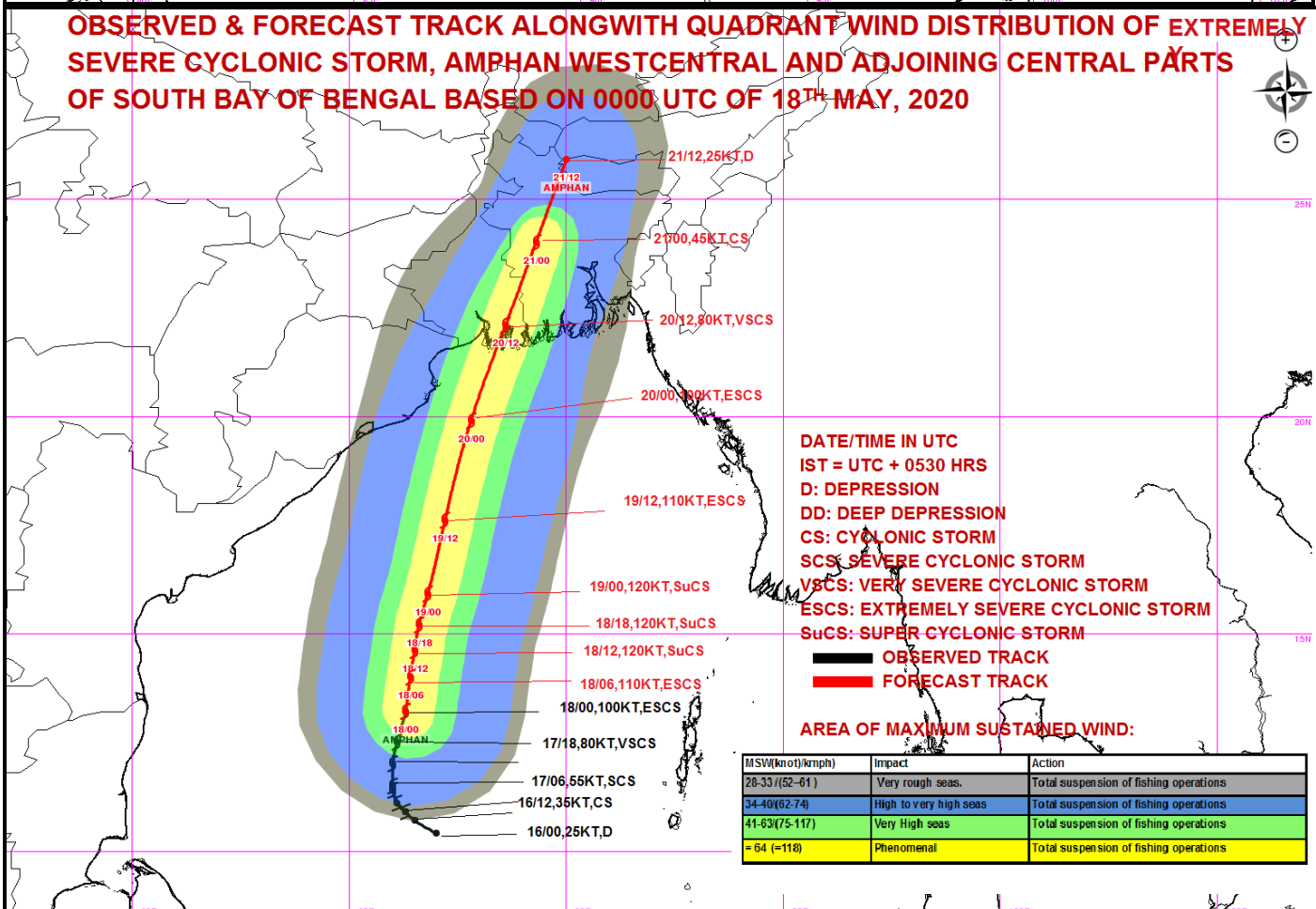
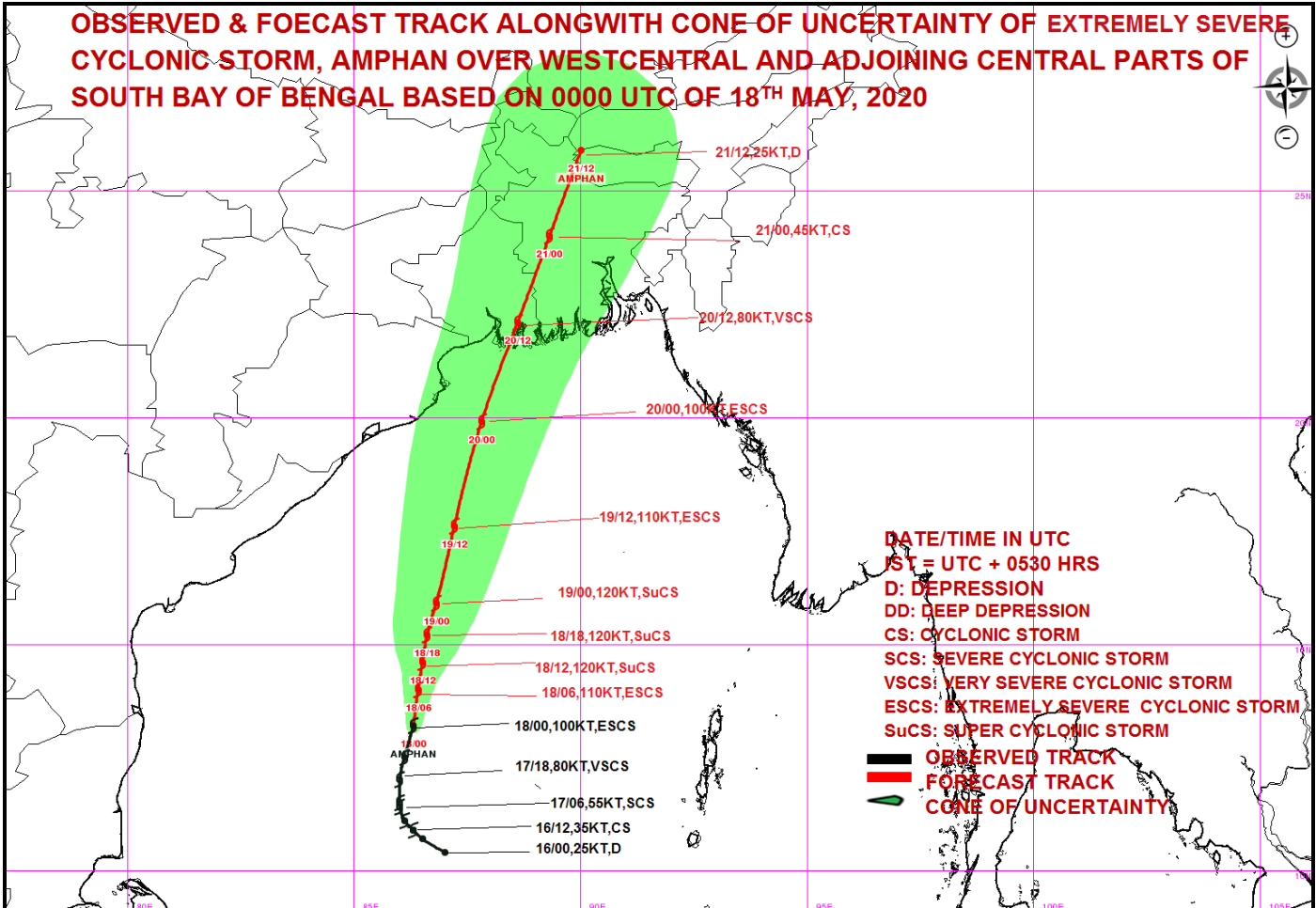
Copy to: CRS, Pune/ ACWC Chennai/ ACWC Kolkata/CWC Bhubaneswar/ /CWC Visakhapatnam

Spatial rainfall distribution: Isolated: <25%, A few: 26-50%, Many: 51-75%, Most: 76-100%
Rainfall amount (mm): Heavy rain: 64.5 – 115.5, Very heavy rain: 115.6 – 204.4, Extremely heavy rain: 204.5 or more.

SAT : INSAT-3D IMG 18-05-2020/(0130 to 0156) GMT
IMG_TIR1_TEMP 10.8 um 18-05-2020/(0700 to 0726) IST
L1C Mercator



Spatial rainfall distribution: Isolated: <25%, A few: 26-50%, Many: 51-75%, Most: 76-100%
Rainfall amount (mm): Heavy rain: 64.5 – 115.5, Very heavy rain: 115.6 – 204.4, Extremely heavy rain: 204.5 or more.



Spatial rainfall distribution: Isolated: <25%, A few: 26-50%, Many: 51-75%, Most: 76-100%
Rainfall amount (mm): Heavy rain: 64.5 – 115.5, Very heavy rain: 115.6 – 204.4, Extremely heavy rain: 204.5 or more.